



APEX
X2

**INDUSTRIAL GRADE
HEAD PROTECTION**

BUILT TO MATCH YOUR PERFORMANCE



Reimagine your boundaries;
we'll get you there.

We innovate because you need equipment to match your performance.

ZERO® helmets are so comfortable they allow you to do your best.

The only helmet you'll need to get the job done and customised to fit your unique style, needs and specifications no matter what the task requires.

ZERO® helmets are the outcome of over 20 years experience in height safety and fall protection. We know what it takes to work at heights, to minimise the impact of falls and enable our customers to do their best work.



BUILT TO MATCH YOUR PERFORMANCE

To actively control the risk of suffering a traumatic brain injury from falling, you need head protection that is fit for purpose for the industrial market. ZERO® offers head protection that is impact tested across multiple parts of the helmet to provide all-around protection. We know a multi-impact tested helmet is the only effective way to minimize the risk of a traumatic brain injury.

All ZERO® helmets are constructed to suit specific requirements of work to keep you protected. Our helmets are manufactured in ISO-9001 accredited factories and are marked with CE compliance and EN safety codes.

**IF YOU'RE SPENDING €90
ON FOOT PROTECTION A YEAR**

**IS €9 ENOUGH
TO PROTECT
YOUR HEAD ?**



Reimagine your boundaries; we'll get you there.



APEX X2

DESIGNED FOR COMFORT

The X2 has a durable lightweight vented shell, which allows air to flow through the helmet while the front and rear height-adjustable headband provides a secure and comfortable fit.

HYBRID
INDUSTRIAL AND MOUNTAINEERING HEAD PROTECTION



ZERO



POLYPROPYLENE OUTER SHELL



SLOTS FOR FITTING EAR PROTECTORS



SIZE ADJUSTMENT SYSTEM WITH EASY WHEEL



LAMP HOLDER CLIPS



INNER TEXTILE PADDING WITH REMOVABLE AND WASHABLE HEADBAND



PROTECTIVE VISOR COVER



INTEGRATED SCRATCH AND FOG RESISTANT VISOR



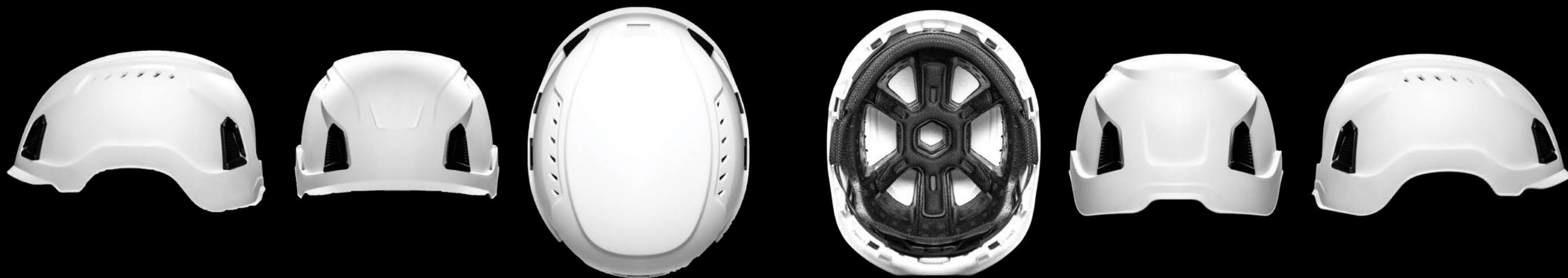
NON-RELEASING CHINSTRAP

FEATURES

- Size: 53 - 63 cm.
- Weight: 455g.
- Polypropylene outer shell.
- Expanded polypropylene (EPP) impact liner.
- Side ventilation.
- Front and rear height-adjustable headband.
- Removable and washable textile inner padding.
- Dielectric with no metal parts.
- Replaceable internal padding.
- Replaceable adjustable wheel ratchet system.
- 4-point adjustable cross-over chin strap.
- Quick-connect buckle. (Chin strap releases at min. 500 N).
- Integrated Cap-attach slots for direct fit hearing protection.
- Direct-fit visor and visor cover configurations (sold separately).
- Scratch and fog-resistant, clear or smoke, half-face visor (sold separately).
- Scratch-resistant visor cover with headlamp attachment (sold separately).
- Direct-fit neck cape (sold separately).
- Direct-fit sun brim (sold separately).
- Reflective identification stickers for maximum visibility in dark conditions (sold separately).

CE

EN12492:2012; EN 397:2012+ A1:2012
LD, -40°C to +50°C. Resistance to lateral deformation (LD)
Protection against impacts at low temperatures (-40°C)
Protection against impacts at high temperatures (+50°C)



INDUSTRIAL GRADE HEAD PROTECTION



To actively control the risk of suffering a traumatic brain injury from falling, it is essential that the correct head protection is worn. If we look at the capability of standard industrial hard hats, they are simply designed to protect you from a single dropped object. If you become the falling object, we must take more action to mitigate the risk of serious head injuries. We believe you need a helmet that is fit for purpose for the industrial market. This can be achieved by wearing head protection that is impact tested across multiple parts of the helmet to provide all-round protection. A multi-impact tested helmet is the only effective way to minimize the risk of a traumatic brain injury during a fall.

APEX X2

MULTI-IMPACT TESTED HEAD PROTECTION

The second generation Apex helmet by ZERO®. We have redesigned the Apex to truly look and perform as an industrial helmet. A helmet to fit your environment and match your performance.



COLOURS: WHITE, FLUO YELLOW, ORANGE, BLACK



APEX X2



MULTI-IMPACT TESTED VENTED HELMET

ZAX2E01

SIZE: 53 - 63cm

WEIGHT: 455g

LIFESPAN: Up to 6 years (+2 year shelf life)

MATERIAL: Polypropylene outer shell, expanded Polypropylene (EPP) interior.

CERTIFICATION:

EN12492:2012; All parts including;
PR4.2.1 (Shock absorption),
PR4.1.3 (Chinstrap Retention System),
PR4.2.3. (Chinstrap Retention System Strength <500N)

EN 397:2012+ A1:2012
LD, -40°C to +50°C. Resistance to lateral deformation (LD)
Protection against impacts at low temperatures (-40°C)
Protection against impacts at high temperatures (+50°C)



HYBRID
INDUSTRIAL AND MOUNTAINEERING HEAD PROTECTION





APEX X2

ELECTRICAL RATED MULTI-IMPACT TESTED HEAD PROTECTION

The APEX X2 is a non vented multi-impact tested helmet with electrical protection, ideal for all types of electrical work carried out at height.



COLOURS: WHITE, FLUO YELLOW, ORANGE, BLACK



APEX X2 ELECTRICAL



MULTI-IMPACT TESTED HELMET WITH ELECTRICAL PROTECTION

ZAX2E02

SIZE: 53 - 63cm

WEIGHT: 455g

LIFESPAN: Up to 6 years (+2 year shelf life)

MATERIAL: Polypropylene outer shell, expanded Polypropylene (EPP) interior.

CERTIFICATION: EN 12492: 2012

PR4.2.1 (Shock absorption),

PR4.1.3 (Chinstrap Retention System),

PR4.2.3.(Chinstrap Retention System Strength <500N)

EN 397: 2012 + A1:2012

LD, MM, -40°C to +50°C. Resistance to lateral deformation (LD)

Protection against molten metal splashes (MM)

Protection against impacts at low temperatures (-40°C)

Protection against impacts at high temperatures (+50°C)

EN50365:2002

PR 6.3.4, PR 6.3.5 Class 0 &; 1 plants 1500 Vdc, 1000 Vac



HYBRID INDUSTRIAL AND MOUNTAINEERING HEAD PROTECTION





MULTI CONFIGURATION

Multiple direct-fit configurations are available including visors, protective visor covers (with headlamp attachment), integrated cap-attach slots for hearing protection & face visor assemblies.



VISORS

CE CERTIFICATION: EN 166:2001, EN 166:2001 Personal eye protection



ZERO® APEX HALF FACE CLEAR VISOR
ZX2V01



ZERO® APEX HALF FACE CLEAR VISOR & PROTECTIVE COVER
ZX2VK01



ZERO® APEX HALF FACE SMOKE VISOR
ZX2V02



ZERO® APEX HALF FACE SMOKE VISOR & PROTECTIVE COVER
ZX2VK02

ACCESSORIES



ZERO® HELMET BAG - ZERO
ZHB



ZERO® APEX SUN BRIM
DIRECT FIT



ZERO® NECK CAPE
ZX2SNP01FL
DIRECT FIT



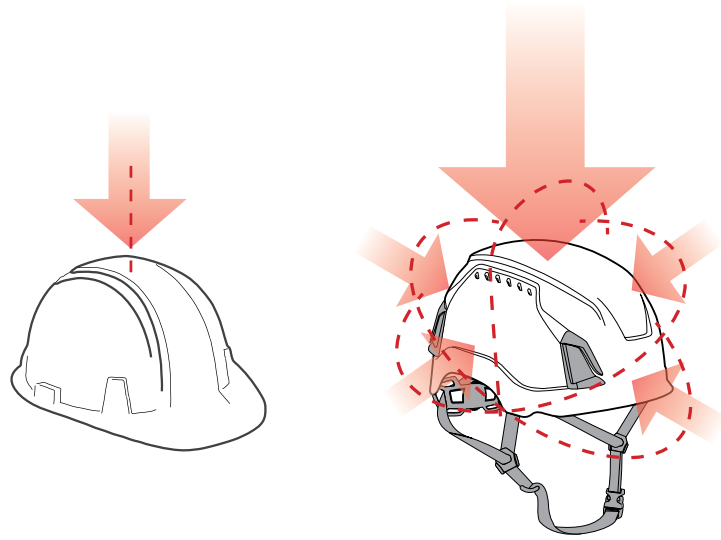
HELMET STICKERS
ZX2HVS01

INNOVATION THAT'S FIT FOR PURPOSE

All ZERO® helmets are designed to support you when you're the falling object.

The task you plan to carry out will determine the type of head protection you require. If there is any risk of you falling from one level to another, a helmet that is multi-impact tested is the only head protection fit for purpose.

Designed for superior comfort and advanced protection, our helmets provide protection from overhead impacts as well as side impact protection making them the ideal choice for most applications in the industrial market.



SINGLE CROWN IMPACT TEST

CROWN AND MULTIPLE SIDE IMPACT TESTING
RATED RETENTION CHIN STRAP

HYBRID
INDUSTRIAL AND MOUNTAINEERING HEAD PROTECTION



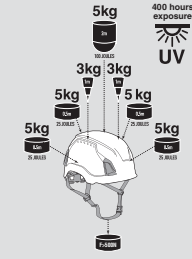
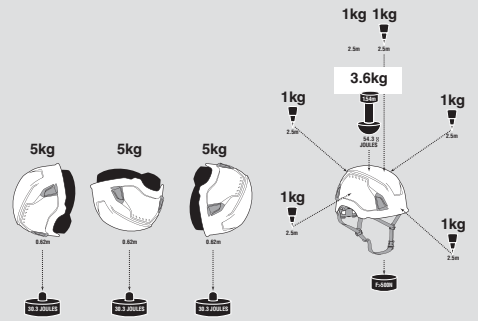
MULTI-IMPACT TESTED PROTECTION

Hard hats are intended to reduce the forces of impact from a blow to the top of the head. Not only are multi-impact tested helmets designed and tested to reduce the force of an impact from a blow to the top of the head, they are also designed to reduce the forces from lateral impact coming from an off-centre, side or top of the head strike during a fall.

For work at height, it is essential that in the event of an uncontrolled fall the helmet is retained on the head. Selecting a helmet fit for purpose to your working application, with multi-impact and penetration testing standards and with a rated retention chin strap, is vital to meeting your reasonably practicable safety requirements.

CHOOSING THE RIGHT HEAD PROTECTION

The task you plan to carry out will determine the type of head protection you require. If there is any risk of you falling from one level to another, a helmet that is multi-impact tested is the appropriate head protection.

EN397:2012	ANSI /ISEA 289.1-2014 TYPE 1	EN 12492: 2012	ANSI /ISEA 289.1-2014 TYPE 2	
				
CROWN IMPACT TEST AS/NZS 1801:1997 EN 397:2021	IMPACT ENERGY TEST ANSI Z89.1-2014 TYPE 1	MULTI SIDE AND CROWN IMPACT TEST EN 12492: 2012	IMPACT ENERGY ATTENUATION TEST ANSI Z89.1-2014 TYPE 2	MULTI SIDE AND CROWN IMPACT TEST ANSI Z89.1-2014 TYPE 2
Protection from falling objects	Reducing the force of impacts to the top of head	Reducing the force of impacts to the top or sides of head	Reducing the force of impacts to the top or sides of head	



APEX
X2 **INDUSTRIAL GRADE**
HEAD PROTECTION

ZERO



Reimagine your boundaries;
we'll get you there.



This document is printed on an environmentally responsible paper produced using Elemental Chlorine Free pulp from responsible sources and manufactured under the strict ISO14001 Environmental Management System.

ZERO HEIGHT SAFETY LIMITED



AUSTRALASIA

10 Holt Place
Harewood, Christchurch 8053
New Zealand
sales@zeroheightsafety.com

SWITZERLAND

Badenerstrasse 122
5466 Kaiserstuhl
Switzerland
sales.eu@zeroheightsafety.com

GERMANY (LOGISTICS)

Gewerbestrasse 8
79801 Hohentengen a.H.
Germany

zeroheightsafety.com