

## ALUBEAM

### RAIL BEAM ANCHOR CLAMP

#### AAB00XM

The ZERO® Alu Rail Beam Anchor is designed as a temporary portable anchor point that can be fixed to a horizontal steel beam with flanges 75mm to maximum 350mm wide. The steel beams must be mounted permanently to stable structure.

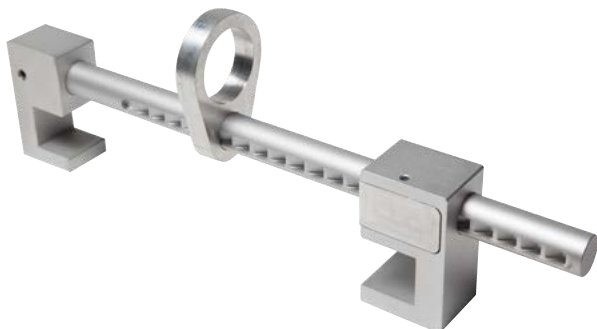
**RATING:** 15kN

**LIFESPAN:** Up to 10 Years

#### CERTIFICATION:

EN 795: 2012 Class B

EN 795:2012 Class B, Personal fall protection equipment. Anchor devices



MODEL	SIZE	WEIGHT (G)	DIMENSIONS	MATERIAL	RATING (KG)
AAB00XM		1370g	440 x 100 x 45mm	Aluminium	15kN

#### PRODUCT FEATURES

- Rated for one person (15kN).
- Quick connect mechanism.
- Adjustable to fit beam flanges 75mm to 350mm wide.
- Click lock action with locator points.
- Steel & Aluminium construction
- Weight: 1.37kg.
- Can thread onto flanges up to 400mm.

#### ZERO HEIGHT SAFETY LIMITED

**AUSTRALASIA**  
10 Holt Place, Harewood,  
Christchurch 8053, New Zealand  
sales.nz@zeroheightsafety.com

**EUROPE & UK**  
Badenerstrasse 122,  
5466 Kaiserstuhl, Switzerland  
sales.eu@zeroheightsafety.com

zeroheightsafety.com

